

**Notice of amendments to the Fouling of Land by Dogs and Dogs on Leads
(Middlesbrough Albert Park) Order 2009**

The Clean Neighbourhoods and Environment Act 2005

The Dog Control Orders (Procedures) Regulations 2006 (SI 2006/798)

Middlesbrough Borough Council

NOTICE IS HEREBY GIVEN that Middlesbrough Council are to make the following amendments to The Fouling of Land by Dogs and Dogs on Leads (Middlesbrough Albert Park) Order 2009:

The south-west quadrant of Albert Park, which is currently designated as a 'dogs off lead area', will be extended to include:

Parts of the north-west quadrant of Albert Park namely either side of the footpath from the park boundary with Park Road North to the tennis courts boundary east of the footpath and and the bowling green boundary south of the footpath.

Parts of the north-east quadrant of Albert Park namely the most northern section bounded by Park Road North to the tree line south of the footpath and not including the Wildlife Area.

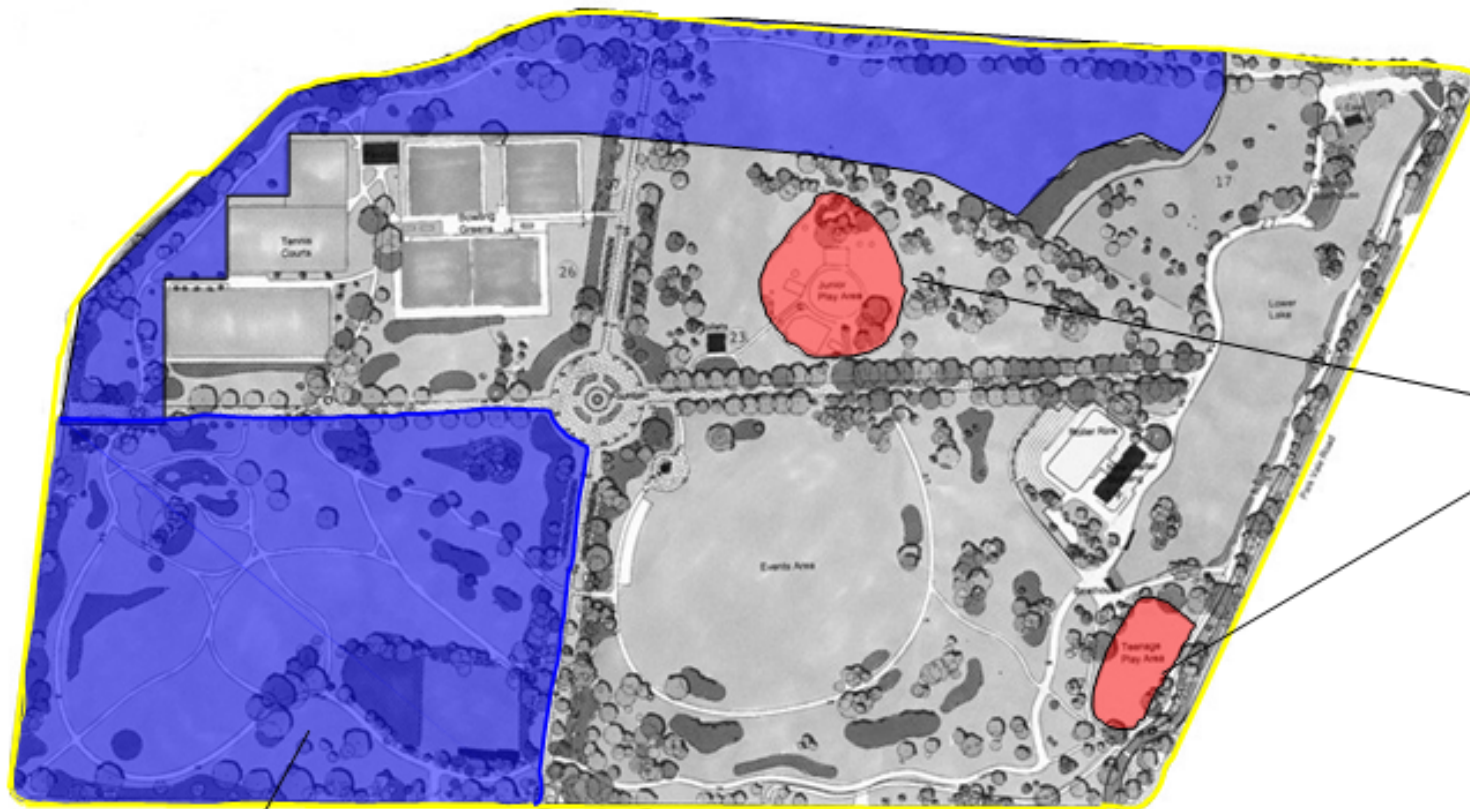
All 'dogs off lead areas' will not apply on a Saturday during the hours of 8.30-10.30am when all dogs must be kept on a lead throughout Albert Park.

This amendment will come into force on Tuesday 8th February 2011

Dated: 31st January 2011

Hide White Space

Park Road North



Children's play areas.
Dogs excluded at all times.

Park Road South

Dog off-lead area to apply at all times excluding Saturdays 8.30 am till 10.30 am when dogs must be on a lead

Dog Control Order – Albert Park 2011