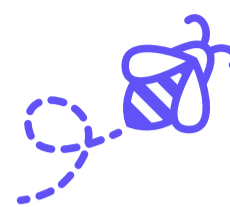


Parents Covid-19 Updates

Middlesbrough
moving forward



#BeTheChange

#MiddlesbroughChildrenMatter

What is this for?

This newsletter has been created by our Participation Team and gives you some tips, tricks and handy information you might find interesting!



A Word from Sue Butcher- Director of Children's Care:

Hello everyone, I hope you are all safe and well! I would like to thank you again for your hard work in making sure your children are inside and social distancing. In this newsletter, we have some information from our SEND team and lots of useful links and resources for you. We also have more updates relating to the relaxing of COVID 19 restrictions. Take care all!

Our SEND Local Offer

Have you visited the Local Offer website lately?

The website provides information on Local services and support that are on Offer to families and young people (aged 0 - 25 years) with special educational needs or disabilities. It's created and updated with the help of parents and young people in Middlesbrough. Here is the link:

www.middlesbrough.gov.uk/localoffer

Did you know that you can watch videos from staff who are involved with your child's journey from teams such as SEN Assessment or Short breaks? Find out about SEN Support or EHCPs, or what schools or support services are in the area and much more. Take a look and see what you can find!

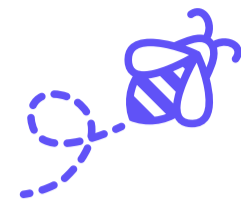
Want to keep up to date with everything SEND during the summer holidays?

Join our 'Local Offer – Middlesbrough' Facebook group. Join our closed group to keep up to date and share your experiences and recommendations with others.



Parents Covid-19 Updates

Middlesbrough
moving forward



#BeTheChange

#MiddlesbroughChildrenMatter

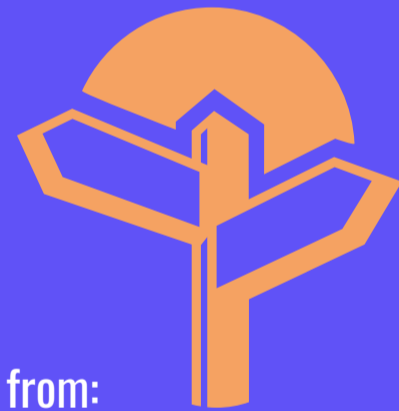
SEND Single Point Of Contact

Our Single Point of Contact and SEN Duty telephone line will continue to operate 5 days a week during the holidays.



What is the SEND Single Point of Contact?

It is one contact number for parents and practitioners to use when they need advice. It is intended to offer a convenient way to navigate systems and processes through which people can raise queries about a range of issues relating to SEND and receive advice on appropriate routes which can be taken to address any concerns or queries. This will not deal directly with “referrals” to services but will help signpost to appropriate services.



Single Point of Contact (SPOC) and SEN Duty team can be contacted from:
Monday to Thursday (9am to 5pm) and Friday (9am to 4.30pm)

You can contact us on:

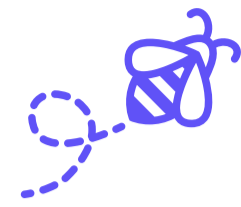
Telephone: (01642) 201831 or

Email: sen@middlesbrough.gov.uk



Parents Covid-19 Updates

Middlesbrough
moving forward



#BeTheChange

#MiddlesbroughChildrenMatter

Homeschooling Resources- Daily Lessons with BBC Bitesize

BBC Bitesize have daily lessons for young people to complete while they are in lockdown. You can also check the Bitesize website to find out answers to things that you/your child may not know! You can access BBC Bitesize on this link: <https://www.bbc.co.uk/bitesize/dailylessons>



Useful links to resources:

[More free resources from ASDAN](#)

You can also visit: [Middlesbrough Achievement Partnership home schooling resources and useful information](#) Visit @MAP_Mbro on Twitter for more info!

Our Middlesbrough Children Matter YouTube Channel!

Subscribe to us on YouTube here:

https://www.youtube.com/channel/UCBVhl_vxZCn9yW_4Zol9hog For videos from Children's Services staff about how we can support and help you and your child(ren).



Online Sli.do Questionnaire

Got any questions you would like to ask? Visit this link: <https://app.sli.do/event/nhukn8pv> to complete our short survey. Or if this doesn't work visit Sli.do.com and enter #C134. Click on the left tab on your phone to ask any questions you may have!