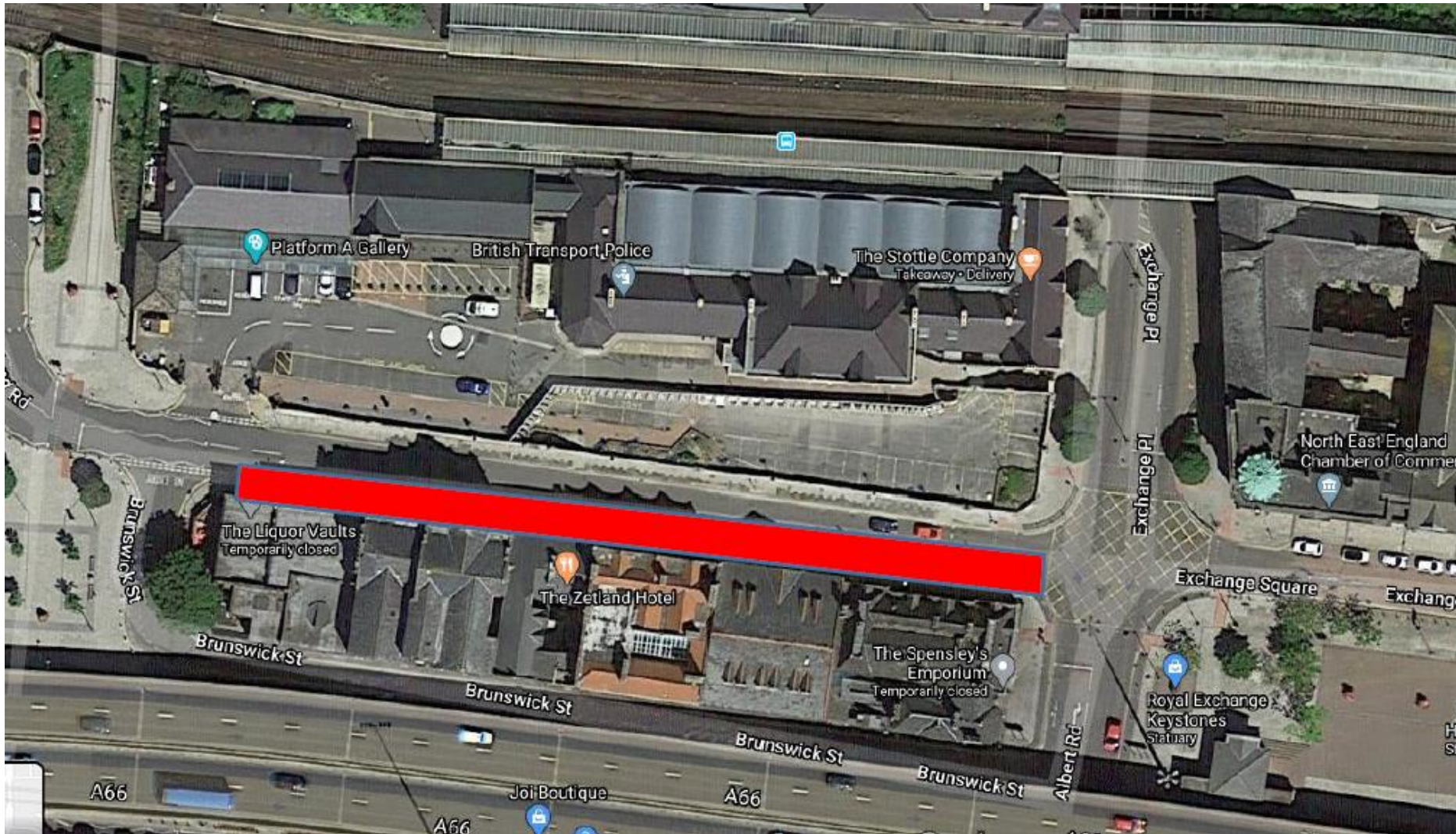


# Zetland Road – Proposed temporary one way eastbound / parking bay closures as required



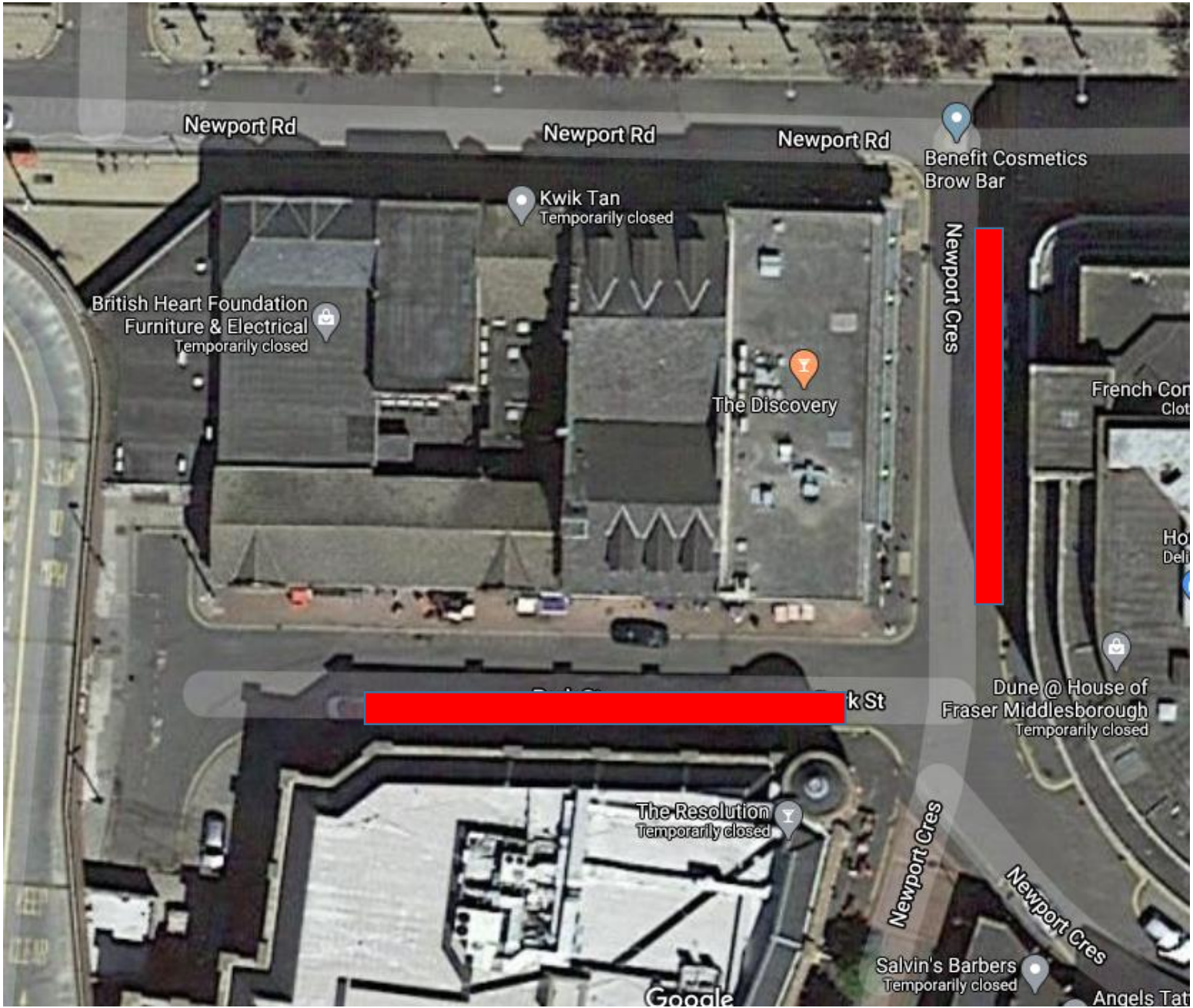


Bolckow Street – Proposed temporary parking bay / loading bay closures as required





Newport Crescent / Park Street – Proposed temporary disabled parking bay / pay & display bay closures as required



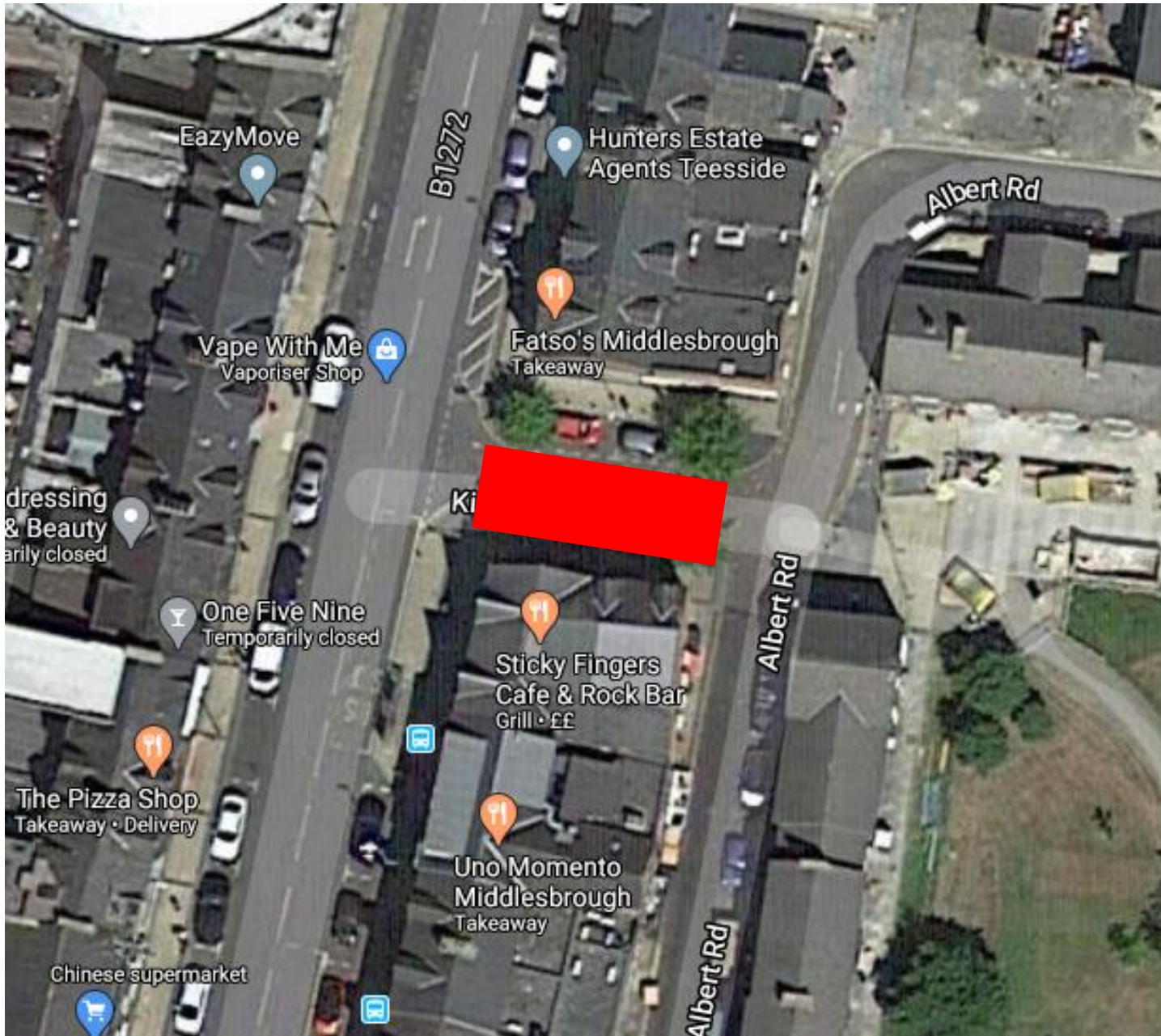


Albert Road – Proposed temporary parking bay / loading bay closures as required





# King Edward's Road – Proposed temporary road closure as required





# Southfield Road – Proposed temporary road closure as required

