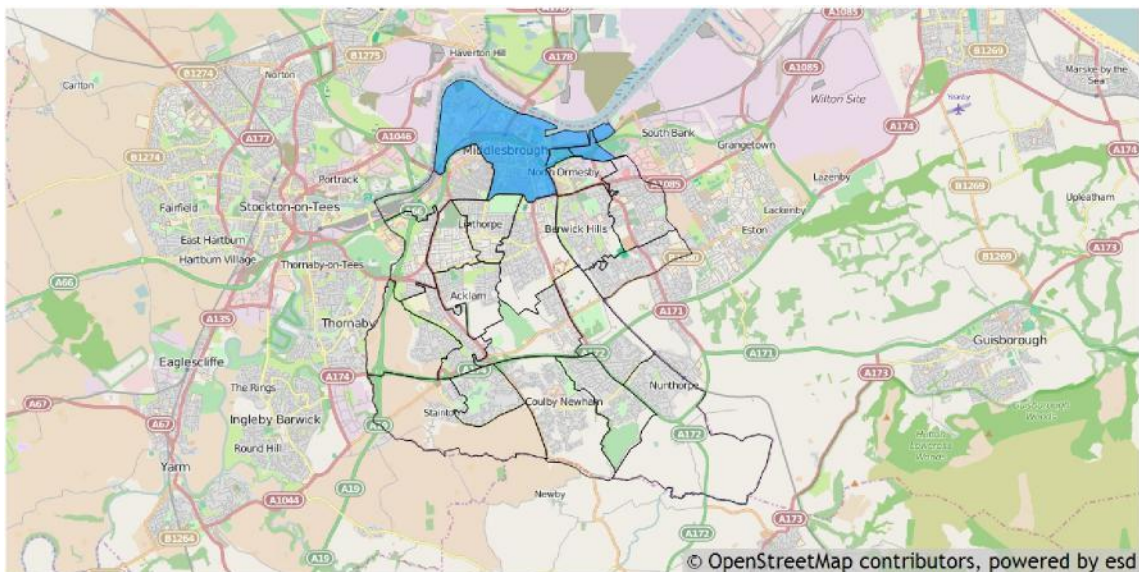


Basic facts about Central 2015 election Ward

This report provides a summary of the latest available information on the demographic and socioeconomic make-up of the Central 2015 election Ward within Middlesbrough. It looks at the population structure and provides information on the economic, housing and educational achievement of the 2015 election Ward.

Central is one of the 20 2015 election Wards of Middlesbrough. It has an area of 572 hectares which represents 10.62% of the total area of Middlesbrough.



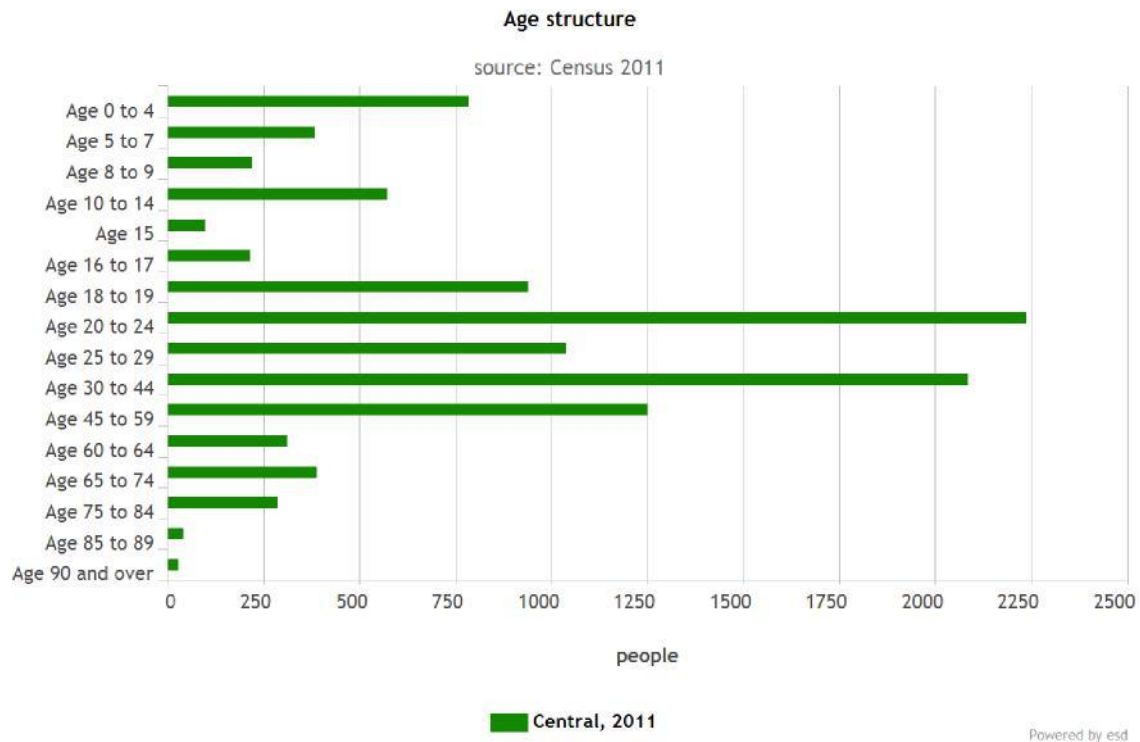
Residents

Central has a resident population of 10,897 which represents 7.87% of the total Middlesbrough resident population of 138,412.

Central's resident population is 45.2% female and 54.8% male.

Age

The mean age of the Central 2015 election Ward population is 30 years compared to a mean age of 38 years for residents in the whole of Middlesbrough. The predominant age band in Central 2015 election Ward is Age 20 to 24 which represents 20.54% of the population.

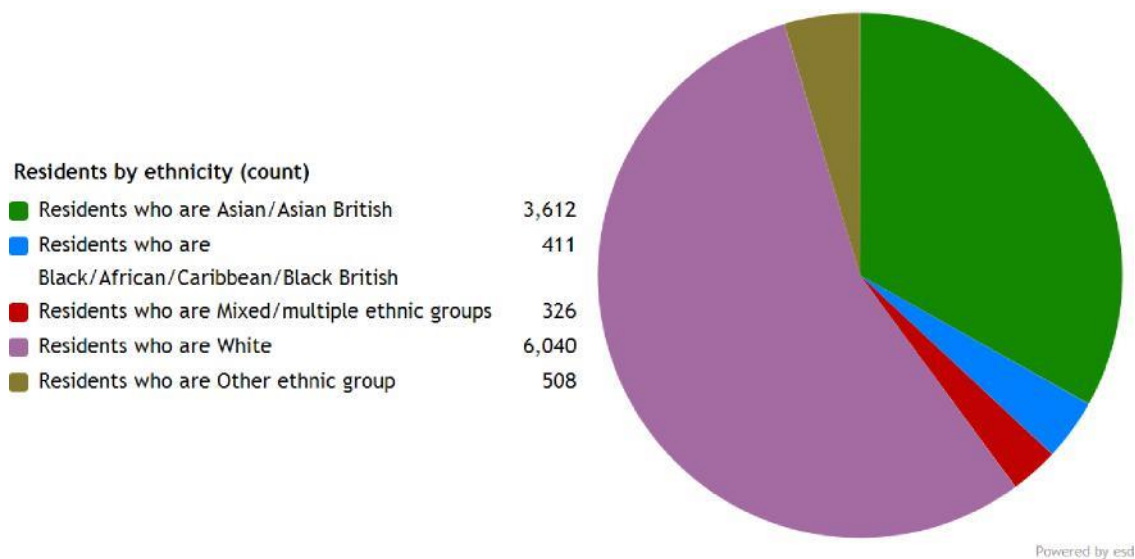


Ethnicity

The largest ethnic group is 'Number of usual residents who are White' with 55.4% of the 2015 election Ward's population. That compares with a figure of 88.2% for the Middlesbrough as a whole, 95.3% for the North East Region and 85.4% for all of England.

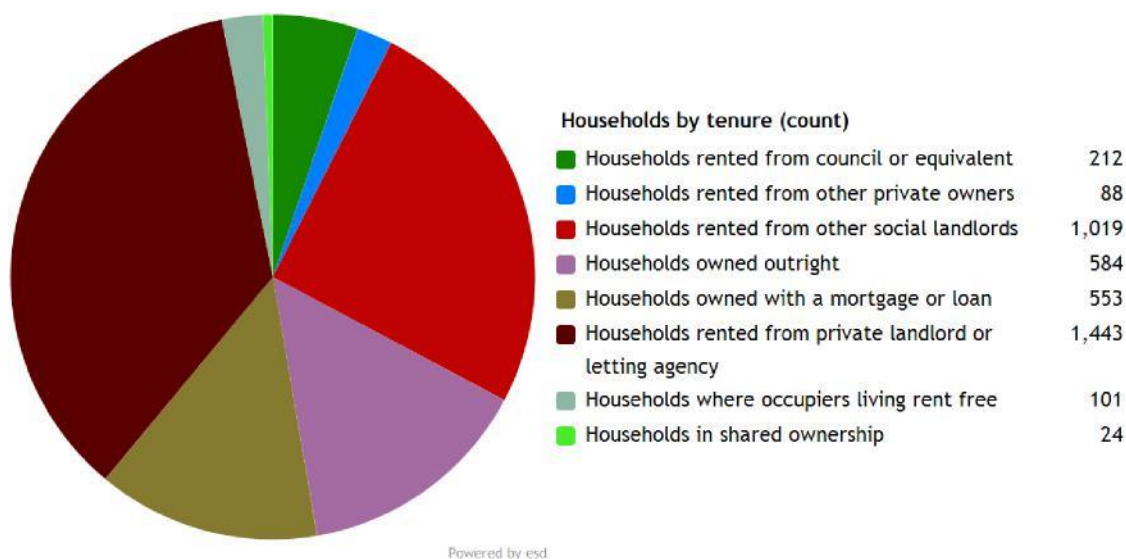
The second largest ethnic group is 'Number of usual residents who are Asian/Asian British' with 33.1% of the 2015 election Ward's population. That compares with 7.8% for Middlesbrough as a whole, 2.9% for the North East Region and 7.8% for all of England.

The ethnic split of Central 's residents is shown below.



Households

Central 2015 election Ward has 4,024 households, which represents 7.03% of Middlesbrough's 57,203 households. The household split by tenure is shown below.



The largest number of households lives in 'Number of all households - Private rented: Private landlord or letting agency' accommodation with 35.9% of the 2015 election Ward's households. That compares with 15.1% for the Middlesbrough as a whole, 23.7% for North East Region and 13.6% for the whole of England.

The second largest number of households lives in 'Percentage of all households - Owned outright' accommodation with 25.3% of the 2015 election Ward's households. That compares with 13.3% for the Middlesbrough as a whole, 10.6% for North East Region and 5.7% for the whole of England.

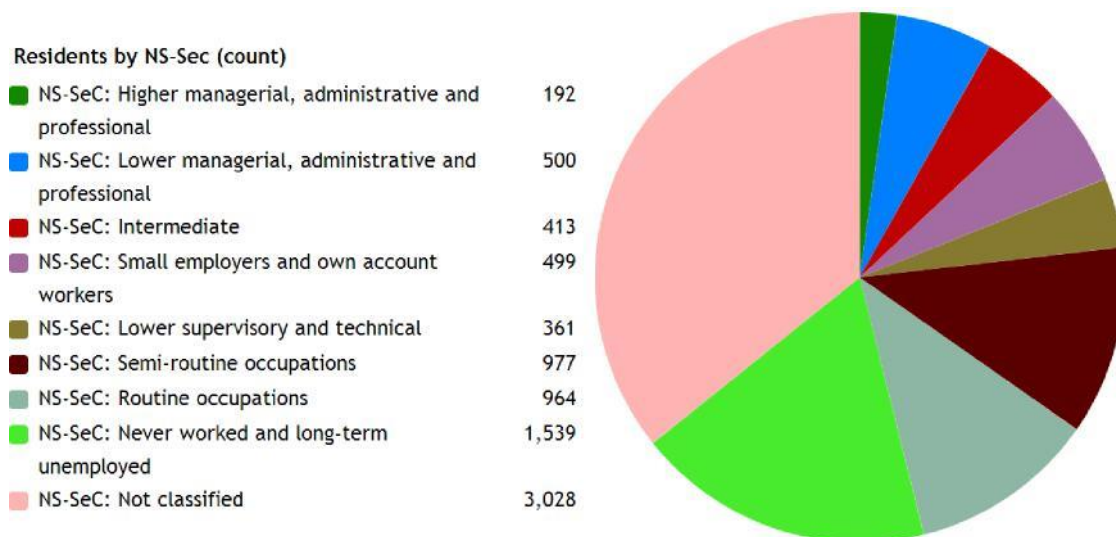
The 2015 election Ward has 604 households with dependent children aged 0 to 4. That represents 15.01% of the 2015 election Ward's households.

1,091 households in the 2015 election Ward have 'Dependent children in household: All ages'. That represents 27.11% of the 2015 election Ward's households.

Employment

The following chart provides a breakdown of the Central 2015 election Ward by socio-economic classification for all residents aged 16 – 74.

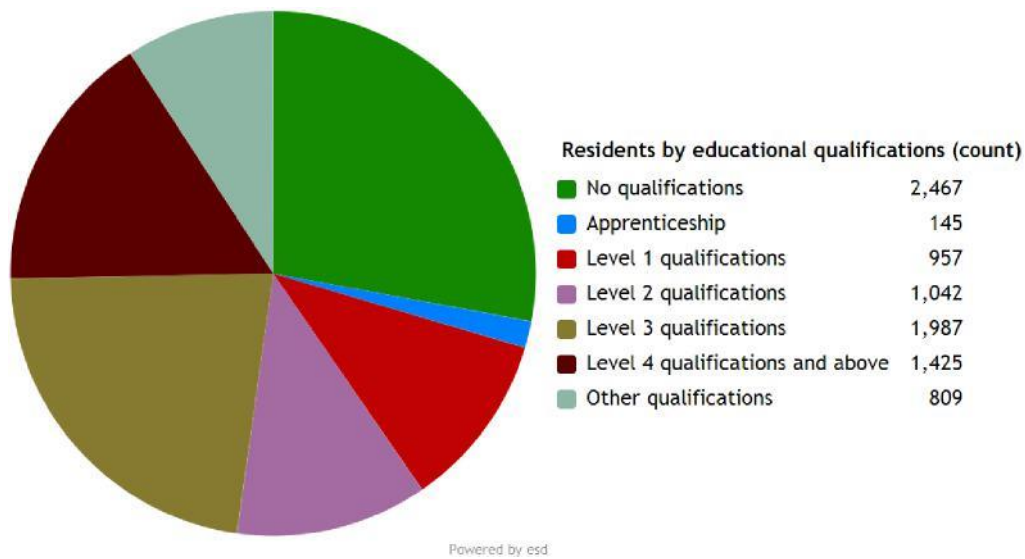
The National Statistics Socio-economic Classification (NS-SEC) provides an indication of socioeconomic position based on occupation. It is an Office for National Statistics standard classification. To assign a person aged 16 to 74 to an NS-SEC category their occupation title is combined with information about their employment status, whether they are employed or self-employed, and whether or not they supervise other employees. Full-time students are recorded in the ' full-time students' category regardless of whether they are economically active or not.



Powered by esa

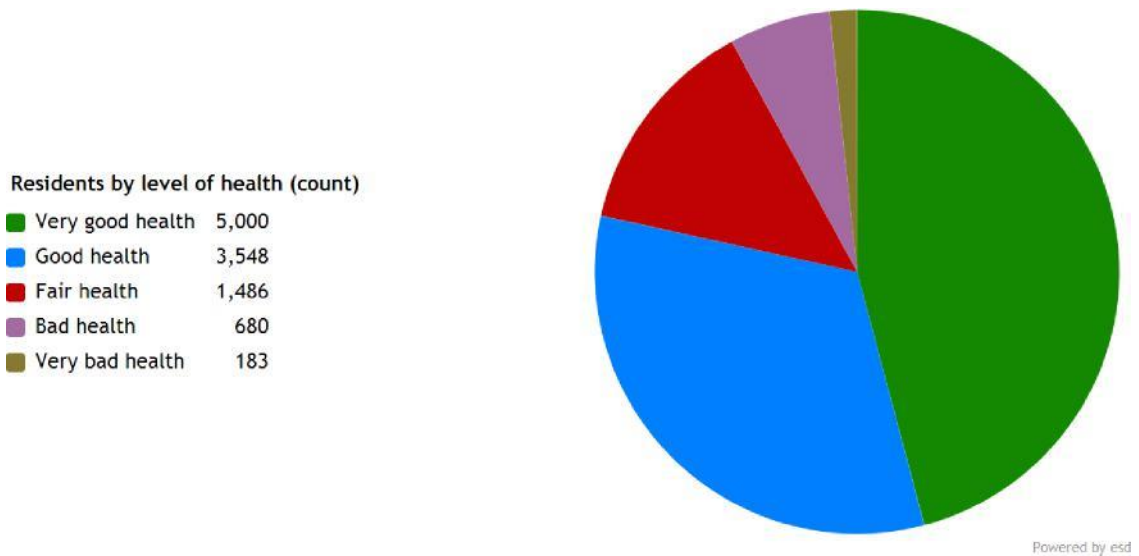
The largest group is 'National Statistics Socio-Economic Classification - Not classified' representing 27.79% of the 2015 election Ward's population.

Education



13.08% of Central 's residents have achieved level 4 qualifications and above compared to 27.40% in England as a whole and 22.64% of Central 's residents have no qualifications compared to 22.50% in England .

Health



Central has 680 (6.2%) residents that report being in bad health and 183 (1.7%) residents that report being in very bad health.

Its ranking for the number of residents in very bad health is 11 (out of 20 2015 election Wards) within Middlesbrough.